

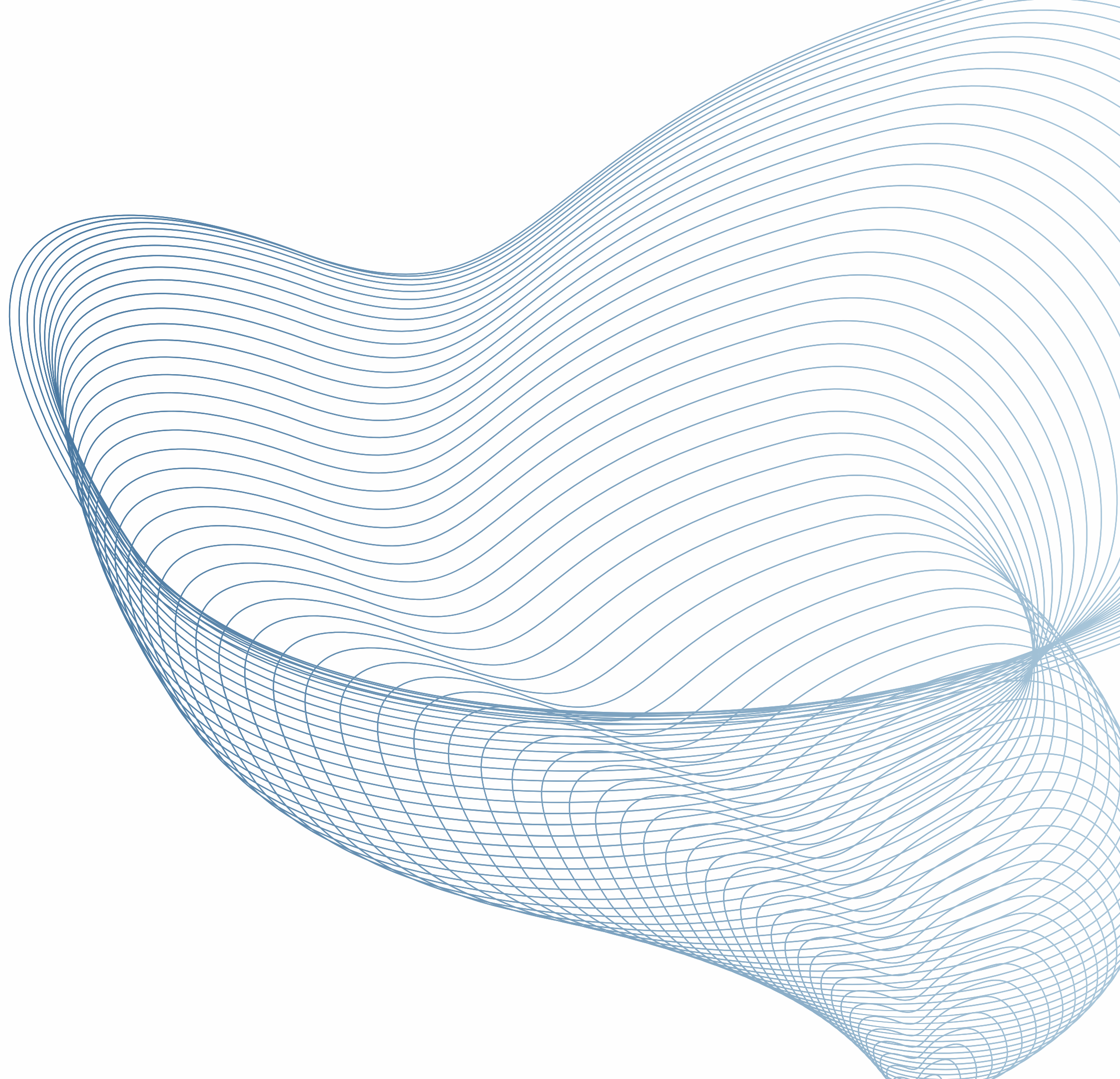


Welcome to Western Control

Your Dependable Partner
In Power & Progress



Created by:
Archit Manoj





Introduction

Established in the year 2001, Western Control Automation Pvt. Ltd. has carved itself as one of the leading manufacturers of a comprehensive range of electrical panels.

Our products are fabricated using high-grade copper wires and CR SHEET, ensuring top-notch quality and reliability for industrial and commercial establishments.





Western Control:

Your Dependable Partner In Power & Progress

Western Control Automation Pvt. Ltd. stands as a leading figure in the field of industrial automation, specialising in the manufacturing of both HT and LT panels. For over two decades, the company has been synonymous with quality, innovation, and trust.



As a dedicated business associate for Crompton Greaves in the medium voltage segment, we at Western Group take pride in our robust monthly output, which is as follows:

Product Category	Monthly Output (Units)
11kV VCB	50
33kV VCB	5
11kV Kiosk	10
CRP (Control Relay Panel)	10

Our commitment to excellence and timely delivery continues to strengthen our association with Crompton Greaves, reflecting our shared values of quality and reliability.



Infrastructure:-



9-Tank Process



CNC Bending



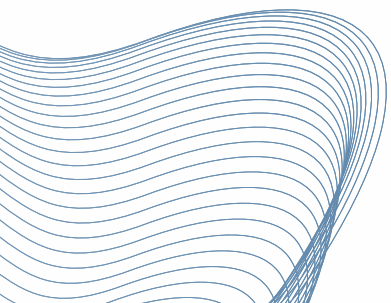
CNC Shearing



CNC Turret



In-House Powder Coating





Type Test Credential

LT Type Test

CENTRAL POWER RESEARCH INSTITUTE
GOVINDPURA : BHOPAL - 462 023

Tel. No 8755-258343
Fax No. 8755 - 287771
Email: cpri@cpri.res.in

PROVISIONAL REPORT 10 NOV 2023

Date of test: 07 November 2023

Test Report No. CPRI/STN/SC/23/0443

1. Customer: Western Control Automation Private Limited, Bhopal, Madhya Pradesh-462019

2. Sample tested: 415 V, 4000 A, LT Panel (Non-Extendable)

3. Serial Number: WCA/CPRI/70K 4. Sample Code No.: STNBMISC23S1738

5. Type: Power Cam Motor Control Center

6. Designation: Main Distribution Panel

7. Drawing Number: WCA/CPRI/70K SHEET No. 1 OF 4, WCA/CPRI/70K SHEET No. 2 OF 4, WCA/CPRI/70K SHEET No. 3 OF 4 & WCA/CPRI/70K SHEET No. 4 OF 4

7.1 Rating of the Sample: 415 V 7.2 Rated Current: 4000 A

7.1 Rated Voltage: 690 V 7.4 No. of phases: Three phase + Neutral

7.5 Rated short time current: 70 kAms for 1.0 second with initial peak of 154 kA

8. Rating for which tested: 70 kAms for 1.0 second with initial peak of 154 kA

9. Type of test carried out: Verification of short circuit withstand strength test.

10. Specification followed: As per customer's requirement and procedure generally followed as per IS 11533 & 10.11.5.3.3 & 10.11.5.3.5 of ISIEC:61439-1:2011 & ISIEC:61439-2:2011

10.1 Customer's requirement: Short circuit withstand strength test to be conducted on busbars only.

11 Test results:

Circuit Diagram No.	Short time current in kA/1s	Duration in second	Equivalent current for 1.0 second in kAms
CPRI/STN/MS23T0443S02	161.072.58	72.62	70.51
(Three phase short circuit withstand strength test conducted on main circuit busbars consisting of HBB-VBB+HBB)			72.82
CPRI/STN/MS23T0443S04	69.243.0	1.0	43.0
(Single phase short circuit withstand strength test conducted on neutral & nearest phase of main circuit busbars consisting of HBB+VBB+HBB)			43.0

Observations: No abnormality. Fine wire fuse intact. All busbars & supports found intact.

Remarks: After test, the sample withstood HV test at 1.0 kVrms for five seconds.

TEST ENGINEER: [Signature] N-CHARGE

This is only a provisional report. The final report alongwith drawings and test results documents will be issued separately within one month from the date of test.

CPRI Govindpura, Bhopal - 462023

Short Circuit @70K

IP 55

HT Type Test

केन्द्रीय विद्युत अनुसंधान संस्थान
CENTRAL POWER RESEARCH INSTITUTE
Govindpura, Bhopal - 462 023

Phone: 080-22072183
Email: cpri@cpri.res.in

SHORT CIRCUIT LABORATORY
भुवनेश्वर

Date: 01 May 2024

No. CPRI/STN/SC/23/0443

M/s. Western Control Automation Pvt. Ltd.
B-877, Phase-3, MIDC Industrial Area,
Bhopal - 462 019, Madhya Pradesh, India

PROVISIONAL REPORT

Read Attn: Mr. S. K. Sankar Narayan, Engineer

Sub: Short time withstand current and peak withstand current tests on
Indoor Vacuum Circuit Breaker (VCB) Panel

Ref: Customer request form dated 10 May 2024.

Dear Sir,

This is to certify that, 11kV indoor Vacuum Circuit Breaker (VCB) Panel bearing Serial No. WCA/CPRI/11KV and with CPRI sample code number as STNBMISC23S1738 has been submitted for the short time withstand current and peak withstand current tests on main circuit as per subclause 7.8.1.4 of IS 62271-200:2021 & IS 62271-1:2017-AMD: 2021 for 20 kA rms for 1.0 s and 154 kA peak.

The above test was completed on 10 May 2024 and without the test.

The final report will be issued shortly.

Thanking you,

Yours faithfully,

[Signature] S. K. Sankar Narayan
S. K. Sankar Narayan
Senior Engineer

STC 11kV VCB

TESTING LABORATORY
NSIC TECHNICAL SERVICES CENTRE
THE NATIONAL SMALL INDUSTRIES CORPORATION LIMITED
(A Government of India Enterprise)
ELECTRICAL TESTING LABORATORY
Bhilai, Bhopal (M.P.) - 461 113
Phone: (031)-2452 8407, Email: nsicbho@nsic.co.in

TEST REPORT

REPORT NO. & DATE: NSIC/STN/SC/23/0443/02 01.05.2024 SHEET NO. 1 OF 3

JOB ORDER NO: 1909/023 01.05.2024

SAMPLE CODE NO: 10301

TEST REPORT ISSUED TO: M/s. Western Control Automation Pvt. Ltd., Bhopal, Madhya Pradesh

CUSTOMER'S REF. NO: Request form vide 10.05.2024

DESCRIPTION OF SAMPLE/EQUIPMENT TESTED: 11KV, 4000A, 154kV VCB Panel

DRAWING NO: WCA/CPRI/11KV/11/01 Rev. 10.05.2024

IDENTIFICATION: BL No. 1, WCA/CPRI/11KV/11/01 Rev. 10.05.2024

QUANTITY: One No.

NATURE OF TEST: Temperature Rise Test

TEST SPECIFICATION: IS 62271-200:2021 & IS 62271-1:2017-AMD: 2021

DATE OF SAMPLE RECEIPT: 17.04.2024

DATE OF TEST: 01.05.2024

DEVIATIONS, IF ANY: Nil

ENCLOSURE: Certified Drawing - 03 sheets (verified dimensions are marked with *)
Ref. Drawing - 03 sheets

MAJOR EQUIPMENT USED: 1. Micro Ohm Test Set
2. Temperature Test Set

TEST WITNESSED BY: Mr. Pradyumn Kumar, E&E, Senior Engineer, Testing Engineer of M/s. Western Control Automation Pvt. Ltd., Bhopal-462019

[Signature] S. K. Sankar Narayan
S. K. Sankar Narayan
Senior Engineer

Temperature Rise Test.

केन्द्रीय विद्युत अनुसंधान संस्थान
CENTRAL POWER RESEARCH INSTITUTE
Govindpura, Bhopal - 462 023

Phone: 080-22072183
Email: cpri@cpri.res.in

Electrical Insulation Technology Division

Date: 27 May 2024

No. CPRI/STN/SC/23/0443

M/s. Western Control Automation Pvt. Ltd.
B-877, Phase-3, MIDC Industrial Area,
Bhopal - 462 019, Madhya Pradesh, India

PROVISIONAL REPORT

Read Attn: Mr. S. K. Sankar Narayan

Sub: IP 55 test on 11KV, 4000A, 154kV VCB Panel and IP 14 Category 2 test of IP 14 Customer request form dated 10 May 2024.

Dear Sir,

This is to certify that, 11KV indoor Vacuum Circuit Breaker (VCB) Panel bearing Serial No. WCA/CPRI/11KV and with CPRI sample code number as STNBMISC23S1738 has been submitted for the IP 55 test as per IS 62271-200:2021 & IS 62271-1:2017-AMD: 2021 for 20 kA rms for 1.0 s and 154 kA peak.

The above test was completed on 27 May 2024 and without the test.

The final report will be issued shortly.

Thanking you,

Yours faithfully,

[Signature] S. K. Sankar Narayan
S. K. Sankar Narayan
Senior Engineer

IP55 VCB

TESTING LABORATORY
NSIC TECHNICAL SERVICES CENTRE
THE NATIONAL SMALL INDUSTRIES CORPORATION LIMITED
(A Government of India Enterprise)
ELECTRICAL TESTING LABORATORY
Bhilai, Bhopal (M.P.) - 461 113
Phone: (031)-2452 8407, Email: nsicbho@nsic.co.in

TEST REPORT

REPORT NO. & DATE: NSIC/STN/SC/23/0443/03 27.05.2024 SHEET NO. 1 OF 1

JOB ORDER NO: 1909/023 01.05.2024

SAMPLE CODE NO: 10301

TEST REPORT ISSUED TO: M/s. Western Control Automation Pvt. Ltd., Bhopal, Madhya Pradesh

CUSTOMER'S REF. NO: Request form vide 10.05.2024

DESCRIPTION OF SAMPLE/EQUIPMENT TESTED: 11KV, 4000A, 154kV VCB Panel

DRAWING NO: WCA/CPRI/11KV/11/01 Rev. 10.05.2024

IDENTIFICATION: BL No. 1, WCA/CPRI/11KV/11/01 Rev. 10.05.2024

QUANTITY: One No.

NATURE OF TEST: 1. Lightning Impulse Voltage Withstand
2. Dry Power Frequency Voltage Withstand

TEST SPECIFICATION: IS 62271-200:2021 & IS 62271-1:2017-AMD: 2021

DATE OF SAMPLE RECEIPT: 17.04.2024

DATE OF TEST: 27.05.2024

DEVIATIONS, IF ANY: Nil

ENCLOSURE: Certified Drawing - 03 sheets (verified dimensions are marked with *)
Ref. Drawing - 03 sheets

MAJOR EQUIPMENT USED: 1. Lightning Impulse Voltage Generator
2. High Voltage Power Frequency Test Set

TEST WITNESSED BY: Mr. Pradyumn Kumar, E&E, Senior Engineer, Testing Engineer of M/s. Western Control Automation Pvt. Ltd., Bhopal-462019

[Signature] S. K. Sankar Narayan
S. K. Sankar Narayan
Senior Engineer

Lightning Impulse Withstand

Ensuring Quality and Compliance



Commitment to Safety



At Western Control, safety is paramount. We ensure the highest levels of safety in our operations, protecting our employees and the integrity of our products. Here are some images showcasing our team working diligently with safety as their top priority.



Our products undergo rigorous testing to ensure they meet the highest standards.

We have several certifications, including:

- ISO 9001
- ISO 14000
- ISO 45001

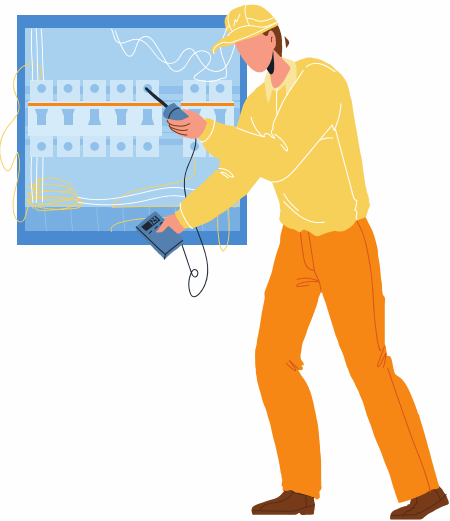


Ensuring Excellence through Rigorous Testing

At Western Control, we uphold the highest standards of quality and safety through rigorous testing of our panels. Our comprehensive testing procedures ensure that every product meets the strictest industry standards.



Equipment	Measurement Type
Relay Testing Kit	Ammeter
Relay Testing Kit	Voltmeter
Digital Vernier Caliper	-
Primary Current Injection Testing Kit	Timer
Primary Current Injection Testing Kit	Ammeter
Secondary Current Injection Testing Kit	Ammeter
Secondary Current Injection Testing Kit	Voltmeter
HV Testing Kit Upto 50KV	mA Meter
HV Testing Kit Upto 50KV	kV Meter
Clamp Meter	-
100A DC mV Testing Kit	mV Meter
100A DC mV Testing Kit	Ammeter
CRM Testing Kit	Resistance Meter
CRM Testing Kit	Ammeter
Megger	-
Megger	-
High Voltage Tester 5KV	mA Meter
High Voltage Tester 5KV	-
Earth Tester	-
Coating Thickness Tester	-





Strategic Partnership with CG Power



“We are proud to announce our strategic partnership with CG Power and Industrial Solutions Limited”

As a Manufacturing Business Associate for Medium Voltage Indoor Panels, we are authorised to manufacture panels using CG make Vacuum Circuit Breakers. This partnership underscores our commitment to quality and excellence in the medium voltage segment

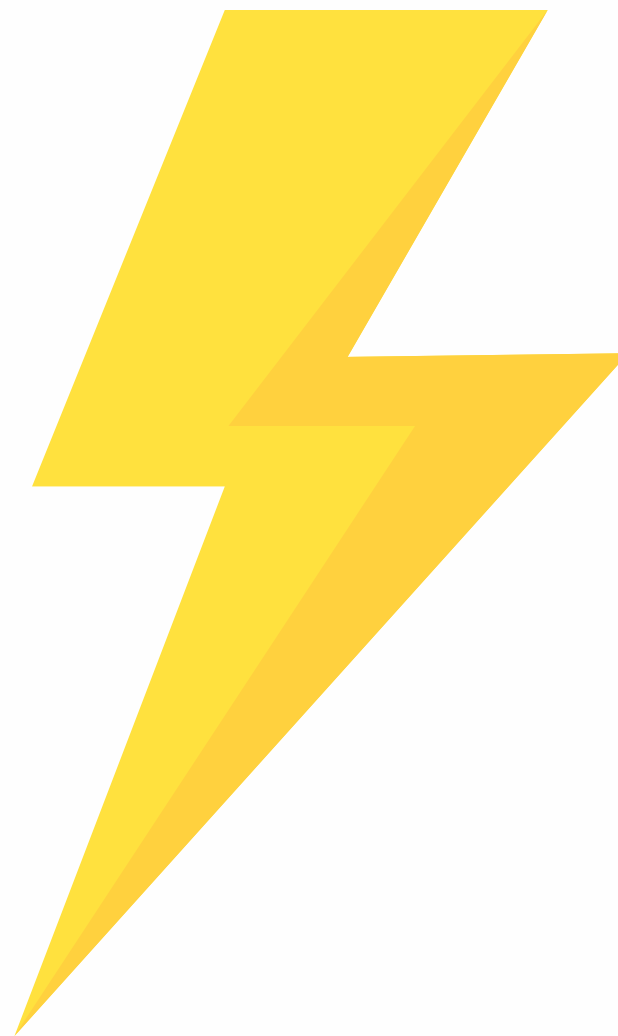


Our Products

Western Control offers a diverse range of products, including

Low Tension (LT) Panels:-

- Distribution Board
- CRP Control Relay Panel
- Power Control Center
- Motor Control Center
- AMF Panel
- VFD Panel
- Capacitor Panels
- Feeder Panels
- Load Sharing Panel
- Synchronising Panel
- Bus Duct
- AC-DC Drive Panel
- Feeder Piller
- Meter Panel
- Main Distribution Board (MDB) Panel
- Automation Panel (PLC)
- Temperature Control Panel



High Tension (HT) Panels:

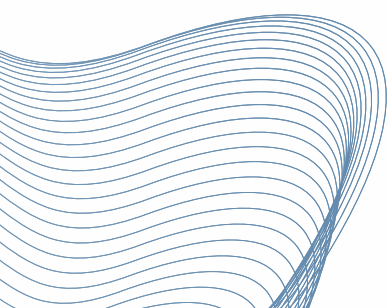
- 11Kv Indoor VCB Panels
- 33Kv Indoor VCB Panels
- 33Kv OutDoor PCVCB (Porcelain Clad Vacuum Circuit)
- 11Kv OutDoor PCVCB (Porcelain Clad Vacuum Circuit)
- 11Kv KIOSK Outdoor VCB Panels
- Control & Relay Panel For VCB





OUR PRODUCT RANGE OF HT PANEL'S

“ One of the few Associates of CG Power with complete expertise of manufacturing from scratch”





Western 11 Kv VCB Panel

Powered By CG VCB



At Western Control, we are proud to manufacture the CG 11kV Vacuum Circuit Breaker (VCB) panels, designed to meet the highest standards of performance and reliability. Below are the key specifications of our 11kV VCB panels.

Particulars	Specifications
Voltage Rating	UP TO 12KV
Rating	800/1250 Amps
Short Circuit Rating	Up to 26.3 KA
Number of Phases	3 POLE
Frequency	50 Hz \pm 5%
Material of Sheet	CRCA
Thickness of the Sheet	2mm (Enclosure) 2.5mm (Load bearing member)
Material of Bus Bar	High conductivity ALUMINIUM/COPPER
Enclosure Protection	IP -4X/5X
Paint Shade	Inside & Outside - Preferred RAL-7035/7032
Design Ambient Temperature	50°C
Cable Entry	For Bottom
Impulse Withstand	75 kVpk
DC Component	<50%



Western 33 Kv VCB Panel

Powered By CG VCB



At Western Control, we are proud to manufacture the CG 33kV Vacuum Circuit Breaker (VCB) panels, designed to meet the highest standards of performance and reliability. Below are the key specifications of our 33kV VCB panels

Particulars	Specifications
Voltage Rating	UP TO 40KV
Rating	1250 Amps
Short Circuit Rating	Up to 31.5 KA
Number of Phases	3 POLE
Frequency	50 Hz \pm 5%
Material of Sheet	CRCA
Thickness of the Sheet	2mm (Enclosure) 2.5mm (Load bearing member)
Material of Bus Bar	High conductivity ALUMINIUM/COPPER
Enclosure Protection	IP -4X/5X
Paint Shade	Inside & Outside - Preferred RAL-7035/7032
Design Ambient Temperature	50°C
Cable Entry	For Bottom
Impulse Withstand	170 kVpk
DC Component	<50%



Western 11 Kv Outdoor KIOSK VCB Panel

Powered By CG VCB



At Western Control, we are proud to manufacture the CG 11kV Vacuum Circuit Breaker (VCB) Outdoor Kiosk panels, designed to meet the highest standards of performance and reliability.

Particulars	Specifications
Voltage Rating	UP TO 12KV
Rating	800/1250 Amps
Short Circuit Rating	Up to 26.3 KA
Number of Phases	3 POLE
Frequency	50 Hz \pm 5%
Material of Sheet	CRCA
Thickness of the Sheet	2mm (Enclosure) 2.5mm (Load bearing member)
Material of Bus Bar	High conductivity ALUMINIUM/COPPER
Enclosure Protection	IP55
Paint Shade	Inside & Outside - Preferred RAL-7035/7032
Design Ambient Temperature	50°C
Cable Entry	For Bottom
Impulse Withstand	75 kVpk
DC Component	<50%



CG 11/33 Kv CG PCVCB



At Western Control, we are proud to manufacture the CG 11kV Outdoor PCVCB (Pole-Mounted Vacuum Circuit Breaker) panels, designed to meet the highest standards of performance and reliability.



Particulars	Specifications
Voltage Rating	UP TO 12KV
Rating	800/1250 Amps
Short Circuit Rating	Up to 26.3 KA
Number of Phases	3 POLE
Frequency	50 Hz ± 5%
Material of Sheet	CRCA
Thickness of the Sheet	2mm (Enclosure) 2.5mm (Load bearing member)
Material of Bus Bar	High conductivity ALUMINIUM/COPPER
Enclosure Protection	IP55
Paint Shade	Inside & Outside - Preferred RAL-7035/7032
Design Ambient Temperature	50°C
Cable Entry	For Bottom
Impulse Withstand	75 kVpk
DC Component	<50%



WESTERN'S COMPACT SUB STATION



At Western Control, our compact substations are designed to provide reliable and efficient electrical power distribution solutions. These substations are ideal for a wide range of applications, ensuring safe and continuous power supply even in challenging environments.

Particulars	Specifications
Voltage Rating	Up to 36kV
Transformer Capacity	Up to 2500 kVA
Primary Voltage	11kV/22kV/33kV
Secondary Voltage	400V/415V
Frequency	50 Hz ± 5%
Enclosure Type	Metal Clad/Outdoor/Indoor
Cooling Type	ONAN (Oil Natural Air Natural)
Enclosure Protection	IP54/IP65
Material of Enclosure	CRCA Sheet Steel, Powder Coated
Bus Bar Material	High Conductivity Copper/Aluminium
Cable Entry	Bottom/Top
Standards	IEC 62271-202, IEC 60076
Features	Remote Monitoring, SCADA Integration, Compact Design, Easy Installation

Client: Indian Railways **Project:** Vande Bharat Express



Control and Relay Panel's (CRP)

At Western Control, our Control Relay Panels (CRP) for 11kV and 33kV systems are designed to offer superior control, protection, and monitoring of electrical systems. .



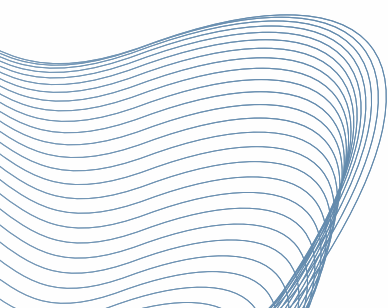
Particulars	Specifications
Voltage Rating	11kV / 33kV
Relay Types	Numerical, Electromechanical
Protection Functions	Overcurrent, Earth Fault, Distance Protection, Differential Protection
Communication Protocols	IEC 61850, Modbus, DNP3
Panel Construction	CRCA Sheet Steel, Powder Coated
Bus Bar Material	High Conductivity Copper/Aluminium
Enclosure Protection	IP55/IP65
Cooling	Natural Air/Forced Air
Cable Entry	Bottom/Top
Testing and Standards	IEC 60255, IEC 60439
Display	Digital/Analog
Control Functions	Automatic, Manual
Additional Features	Remote Monitoring, SCADA Integration



OUR PRODUCT RANGE

OF

LT PANEL'S





Low Tension (LT) Panels:-

- Distribution Board
- CRP Control Relay Panel
- Power Control Center
- Motor Control Center
- AMF Panel
- VFD Panel
- Capacitor Panels
- Feeder Panels
- Load Sharing Panel
- Synchronising Panel
- Bus Duct
- AC-DC Drive Panel
- Feeder Pillar
- Meter Panel
- Main Distribution Board (MDB) Panel
- Automation Panel (PLC)
- Temperature Control Panel

At Western Control, we manufacture Low Tension (LT) Panels designed to meet the highest standards of performance and safety.

These panels are essential for the distribution and management of electrical power in various industrial and commercial settings. Below are the key specifications and features of our LT Panels



LT Panel's Supplied to EXIDE Industries

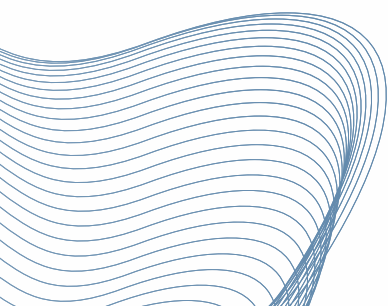


OUR COMPLETED

Range of

ELECTRICAL PROJECT

WE ARE RAJASTHAN'S A CLASS contractor





Projects:-

These projects highlight our capability to deliver high-quality panels and services to a diverse clientele, reinforcing our position as a trusted partner in the electrical solutions industry.

Client	Location	Project Value	Scope
AHLCON Parenterals (India) Ltd	Bhiwadi	₹6.5 Cr	Panel & Project
Romson Jr. Group	Agra	₹1.08 Cr	Panel & Project
Stanford Laboratories	H.P	₹1.02 Cr	Panel & Project
Revacure Healthcare	Jabalpur, M.P	₹1.00 Cr	Panel & Project
Ananta Medicare	Shri Ganga Nagar, Rajasthan	₹1.10 Cr	Panel & Project
Yokohama Tyres	Vishakhapatnam, A.P	₹5.5 Cr	Panel & Project
Exide Industries Ltd	Bawal	₹5.2 Cr	Project-33KV
Lumax Industries Limited	Bawal, Haryana	₹2.5 Cr	Panel & Project

&
MANY MORE

Exide Bawal



Yokohama Vizag



Romsons Agra



B Braun Bhiwadi





Our Group Client's



Thank you for allowing us the opportunity to share our operations.

We appreciate your interest and support!

